

# **NARAYANA INFORMATION SYSTEM**

**ERP DOCUMENT FOR ALL MODULES OF  
E-GOVERNANCE**



**NARAYANA PHARMACY COLLEGE**

**NELLORE**


*Handwritten signature in blue ink.*

PRINCIPAL  
NARAYANA PHARMACY COLLEGE  
NELLORE - 524 002



## Index

Sl.No.	CONTENTS	Page. No.
1.	Introduction	1
2.	Features	2
3.	Objectives	2
4.	Flow Diagram	3
5.	Module Details	3
6.	Student Information System Module	3
7.	Biometric Management System Module	5
8.	Library Information System Module	6
9.	Inventory Management System Module	8
11.	Modules Under Planning & Development	11
12.	Advantages	11
13.	Conclusion	12

  
PRINCIPAL  
NARAYANA PHARMACY COLLEGE  
NELLORE - 524 002



## NARAYANA PHARMACY COLLEGE::NELLORE

### NARAYANA INFORMATION SYSTEM

---

#### INTRODUCTION

The Narayana Information System is an application that permits you to compare, manipulate and present student data in a meaningful manner, generating a clear view of records and provides advanced search facilities with various search options.

Student information system is a management information system for education establishments to manage student data. Student Information Systems (often abbreviated as SIS systems) provide capabilities for entering results of student test and other assessment scores, build student schedules, track student attendance, and manage many other student-related data needs in a college.

The Biometric management system is a professional fingerprint access and time attendance control system. It uses fingerprint instead of card system for access. It allows us to capture the real time attendance.

Library information system manages and stores books information electronically according to student needs. The system helps both students and library manager to keep a constant track of all the books available in the library. It allows both the admin and the student to search for the desired book. Professionals & Professional Students depend heavily on access to varied information resources to make intelligent and informed choices for education and research protocols. Library information system provides all the necessary information about all the books.

The Inventory Management System is a real-time inventory database capable of connecting multiple stores. However, the system merely records sales and restocking data and provides notification of low stock at any location through email at a specified interval. The goal is to reduce the strain of tracking rather than to handle all store maintenance. Further features may include the ability to generate reports of sales. The main goal of Inventory Management System is to ensure consistent availability of supplies. Thus, Inventory Management System is directed toward administrators of college and stock managers who are responsible of maintaining sufficient goods on hand.

PRINCIPAL  
NARAYANA PHARMACY COLLEGE  
NELLORE - 524 002

---



## NARAYANA PHARMACY COLLEGE::NELLORE

### NARAYANA INFORMATION SYSTEM

---

#### Scope

This software application is built on the case study of NIET, Greater Noida after analysing the requirements at its premises pertaining to adding student information, updating student information, deleting student information, consistent availability of supplies, maintaining sufficient goods on hand. It also provides with advanced data search facilities and data privacy facilities to create authorized users with passwords and also for changing their passwords at some later stage.


#### FEATURES

The Narayana Information System empowers you to:

- Manage Student Information efficiently.
- Record Student Billing details like name, roll- no., course, stream, semester, date of birth, father's name, address, phone no., email id etc.
- Add, Update & Delete Students information easily.
- Trace Student Records through this Software Advanced Search features.
- Manage your own Security by providing authorized user name & passwords.
- Work Process
- Leave Management System
- Employee Data Bank (HR Recruitment Purpose)
- Employee Vehicle Management
- Holiday Management
- Library books maintenance and daily activity tracking.

#### OBJECTIVES

- To provide a proper registration channel/ system to the new students.
- 

  
PRINCIPAL  
NARAYANA PHARMACY COLLEGE  
NELLORE - 524 002



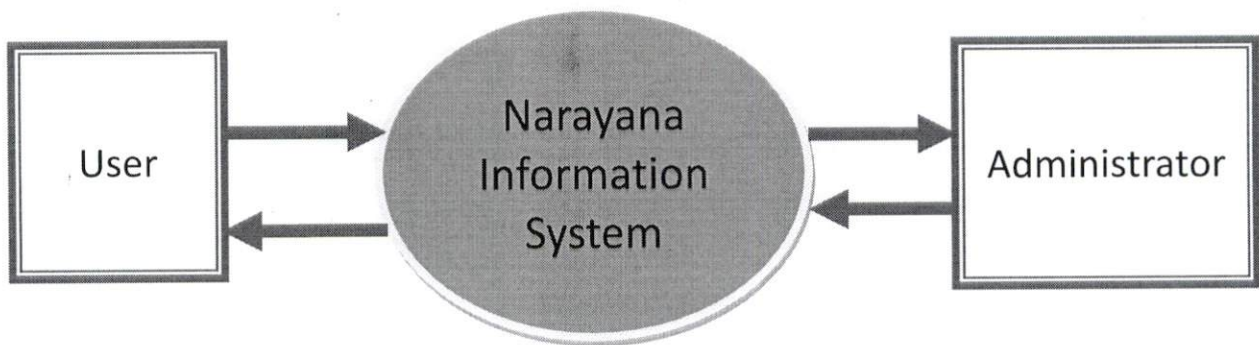
## NARAYANA PHARMACY COLLEGE::NELLORE

### NARAYANA INFORMATION SYSTEM

---

- To maintain all the accounts of the students in digital form from enrollment up to the end of the study.
- To update the information available to the departments at their desk whenever required in just a click away.
- To have a centralized control over the records of the students.

#### FLOW DIAGRAM



#### MODULES DETAILS

#### STUDENT INFORMATION SYSTEM

Modular Details of the Student Information System are:

- Student Profile “Add Student Information” Module
- Update Student Information Module
- Delete Student Information Module
- View Student Database Module
- Advanced Search Module
- Security “Change Password” Module

  
PRINCIPAL  
NARAYANA PHARMACY COLLEGE  
NELLORE - 524 002

#### Add Student Information:

This module allows us to add student profile records under the following attributes

---



## NARAYANA PHARMACY COLLEGE::NELLORE

### NARAYANA INFORMATION SYSTEM

---

- Name
- Roll Number
- Course & Stream (In case of B.Tech only)
- Semester
- Date of birth
- Father's Name
- Address
- Phone number & E-Mail ID

#### **Update Student Information:**

- This module allows us to update student profile records for the attributes that have been added under the “Add Student Information System” module.
- The database is Updated each time we click on the “Update Student Information” button.
- The records that are existing in the database can be updated for the latest information that is available.


#### **Delete Student Information:**

- This module facilitates deletion of unwanted and old information which of no use to us.
- Records that are of no use can be deleted with this module.

#### **View Student Database:**

- This module allows us to view the database contents only for the authorized users who have logged in.
- The database contents can be viewed exactly as they exist in the database.

#### **Advanced Search:**

  
PRINCIPAL  
NARAYANA PHARMACY COLLEGE  
NELLORE - 524 002

---



## NARAYANA PHARMACY COLLEGE::NELLORE

### NARAYANA INFORMATION SYSTEM

---

- The “Advanced Search Module” is basically a Search ENGINE. Where we can search on basis of Keywords for any of the fields like “Roll No/Name/Project Experience”.
- This makes easy the searching of the records for a particular student.

#### Security “Change Password”:

- The “Student Information System” has its own security features.
- It allows login only for registered and privileged users with passwords.
- Those users who do not have logins and try to log into the System are denied access into system.
- If a user wishes to change his /her password, he can utilize the “Change password” module. On successful updating of the password changes, it displays a Congratulations message.

#### BIOMETRIC MANAGEMENT SYSTEM:

- Work Process
- Leave Management System
- Employee Data Bank (HR Recruitment Purpose)
- Employee Vehicle Management
- Holiday Management

#### Bio Attendance Accessing Locations

- A-Block - at each Floor
- B-Block - at entrance and at II floor near stair case
- C-Block - at the entrance, at HOD Chambers

#### Work Process

- Biometric registrations will be done for newly joined employees in devices

  
PRINCIPAL  
NARAYANA PHARMACY COLLEGE  
NELLORE - 524 002



## NARAYANA PHARMACY COLLEGE::NELLORE

### NARAYANA INFORMATION SYSTEM

---

- Data retrieved from all devices and will be posted to database through the biometric applications which requires continues supervision.
- Data backup and transfer when devices data lost.
- Data posted in database will be processed as per the shifts assigned at regular intervals (in and out time calculations)
- Attendance posted will be used for calculation various kinds of reports as per the management requirement.
- LOP calculations will be processed as per the predefined formulas defined by the management.

#### Leave Management System


- Leaves will be defined by the institutional heads as per their policies.which will vary across the organization.
- Late entry calculation will also be changed across organization.
- Leave policies also defined and vary across organization by institutional heads.
- LOP process is stated as execution of existing leave deduction afterwards lop will come into picture.
- hierarchy will be maintained in leave approval and confirmations

#### Employee Data Bank (HR Recruitment Purpose)

- Each aspirant applying for job at our organization details will be captured and saved with us.
- Based on our requirements data will be retrieved and they will be offered a chance to serve our organization.

#### Employee Vehicle Management

1. Employee vehicles data will be collected and saved.
2. Data will be used for restricting entry to only authorised persons.

  
PRINCIPAL  
NARAYANA PHARMACY COLLEGE  
NELLORE - 524 002





## NARAYANA PHARMACY COLLEGE::NELLORE

### NARAYANA INFORMATION SYSTEM

---

#### Holiday Management

1. Holiday management will be done as per the campus requirements which will vary across institutions.
2. Compensatory off will be awarded based on the working on holidays.

#### LIBRARY INFORMATION SYSTEM

- Professional Students depend heavily on access to varied information resources to make intelligent and informed choices for education and research protocols. Library management system provides all the necessary information about all the books.
- It becomes necessary for colleges to keep a continuous check on the books issued and returned and even calculate fine.
- This task if carried out manually will be tedious and includes chances of mistakes. These errors are avoided by allowing the system to keep track of information such as issue date, last date to return the book and even fine information and thus there is no need to keep manual track of this information which thereby avoids chances of mistakes.

Thus, this system reduces manual work to a great extent allows smooth flow of library activities by removing chances of errors in the details.

- **Admin login:** Admin is the one who administers the system by adding or removing e-books into and from the system respectively.
- **User login:** Students have to register themselves into the system to create an account. After registering successfully, they can then login into the system by entering 10 digits mobile number and their email id.
- **Add and Update Books:** The admin can add books to the system by entering the details of the books and can even update the details.
- **Tracking the Student record:** The system can track the period for which the book has been issued to Student and calculates fine if the book is not returned on time.

PRINCIPAL  
NARAYANA PHARMACY COLLEGE  
NELLORE - 524 002

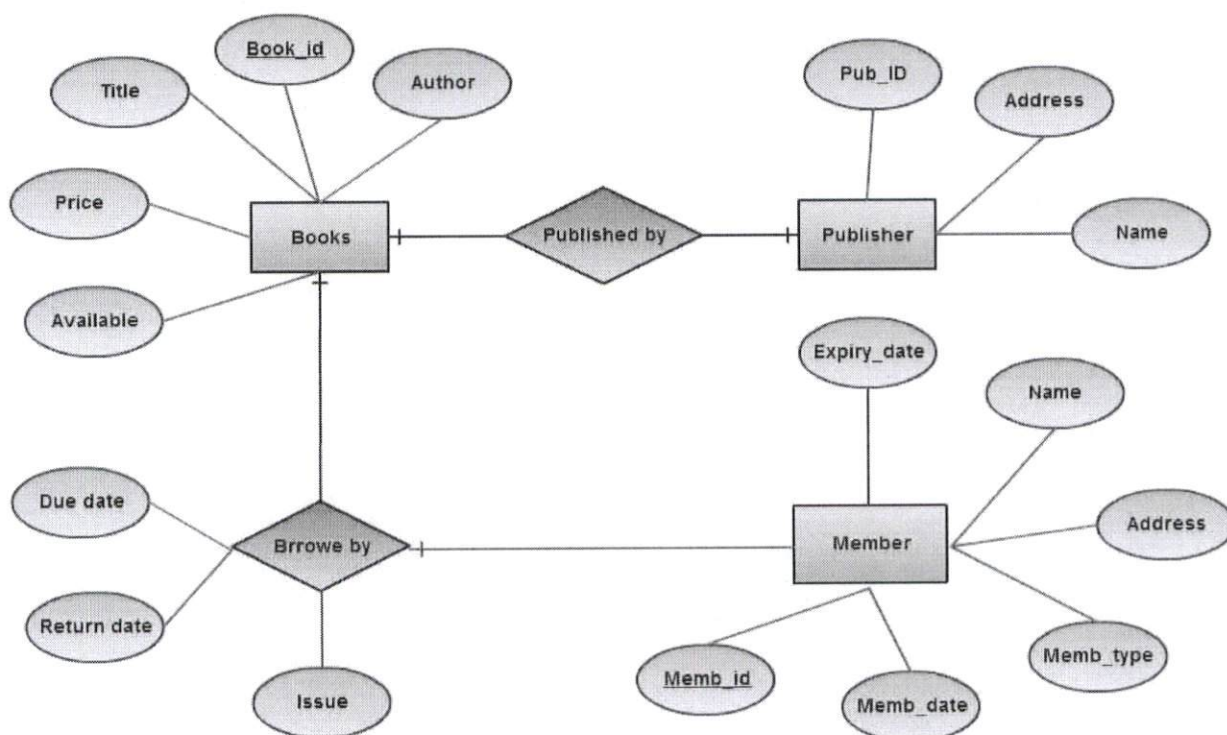


## NARAYANA PHARMACY COLLEGE::NELLORE

### NARAYANA INFORMATION SYSTEM

- **Quantity Update-** The quantity is updated by the system depending on the quantity ordered.


#### E-R Diagram of Library Management System



#### INVENTORY MANAGEMENT SYSTEM

Inventory Module Deals with stock related data which includes:

- Stock in department and sub store as well as warehouse.
- Issues from warehouse to sub store & Sub store to department
- Consumption in Department.
- Purchases in warehouse for monthly buffer stock and based on department requisitions
- All requisitions and purchases are processed after approval from respective in charges
- Materials can be transferred from one department to other

  
NARAYANA PHARMACY COLLEGE  
NELLORE - 524 002



## NARAYANA PHARMACY COLLEGE::NELLORE

### NARAYANA INFORMATION SYSTEM

---

- Requisitions raised by department can be tracked online.
- Department expenditure analysis can be done.
- Item wise usage analysis can be done.
- Items can be returned online to store from department which remains unused.

PRINCIPAL  
NARAYANA PHARMACY COLLEGE  
NELLORE - 524 002

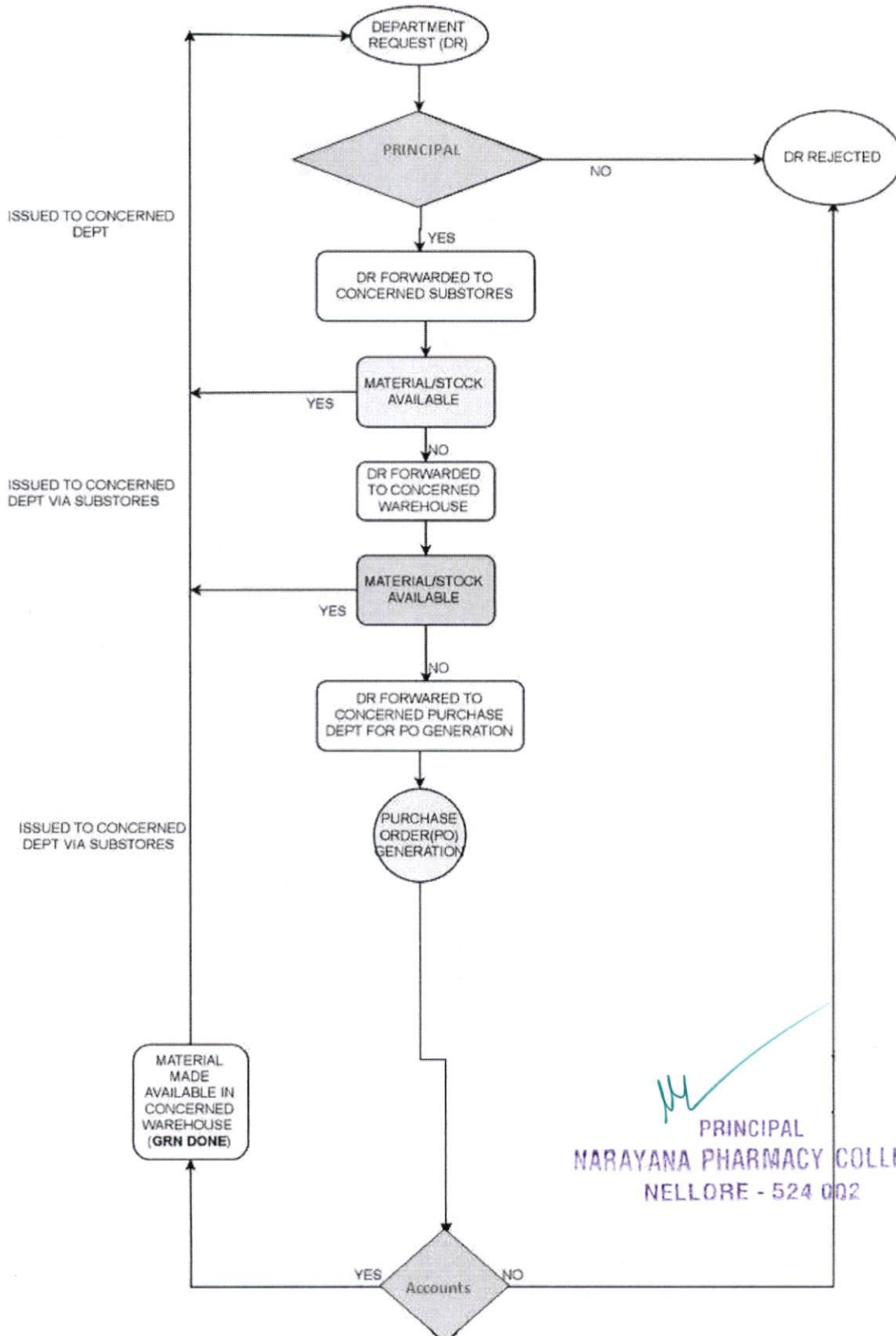
---



# NARAYANA PHARMACY COLLEGE::NELLORE

## NARAYANA INFORMATION SYSTEM

### PROCUREMENT PROCESS



*M*  
PRINCIPAL  
NARAYANA PHARMACY COLLEGE  
NELLORE - 524 002



# NARAYANA PHARMACY COLLEGE::NELLORE

## NARAYANA INFORMATION SYSTEM

### MODULES UNDER PLANNING AND DEVELOPMENT

Online web/Mobile Based Applications

#### 1. Leave Management

- Employees can Apply their Leaves from mobile
- Same leaves Can be Approved or rejected by the In-charge
- Employees Can View their Profile
- Employees Attendance can be viewed
- Employees Availability Can be viewed
  - Class
  - Lab
  - Exam Duty
  - Meeting

#### 2. Vehicle Management

- Online Vehicles Request
- Approvals
- Reports

#### 3. Gate Pass

We can monitor all the Commercial / Ambulances/ Material Vehicles in and out

- Out Going Gate Pass Can be generated for the material going out
- Security Can Validate
- If Returnable Same can be Verified
- Incoming Items against PO Can be monitored
- Returnable equipment/Material Can Monitored

#### ADVANTAGES

- It facilitates planning. It minimizes Information Overload.
- It encourages Decentralization.
- It brings Co-ordination. It makes control easier. SIS assembles, processes, stores, retrieves, evaluates, disseminates, the Information.

  
PRINCIPAL  
NARAYANA PHARMACY COLLEGE  
NELLORE - 524 002



## NARAYANA PHARMACY COLLEGE::NELLORE

### NARAYANA INFORMATION SYSTEM

---

- The system excludes the use of paper work by managing all the book information electronically.
- Admin can keep updating the system by providing the new books arrival in system and their availability thus students need not to go to library for issuing purpose.
- The system has books well organized and systematically arranged in different categories in the system so that user can easily search and find the book.
- Thus, it saves human efforts and resources.

### CONCLUSION

This Narayana Information system project will serve as a useful approach to data base dialog box to update add, advanced search options for the authorized person. It serves as a helpful approach for the users. It reduces the time taken by the user to add,update,delete,view& search the information. Thus, the project is the user-friendly approach.

PRINCIPAL  
NARAYANA PHARMACY COLLEGE  
NELLORE - 524 002

---